

Picture made  
on a iPF500



In detail you  
can clearly  
see shades  
and detail





Same picture  
on a iPF6100



In detail you  
can see the problem  
but only here  
in the bottom part  
against the white  
and with the leg  
the whiskers are  
shown good  
And hair at the  
head are good

What can this be?  
Driver?  
Profiles?  
Printhead?  
Mainboard?



## Settings

I printed on a pc with fresh installed driver from canon

Paper -> Glossy

Quality -> High or Highest

Did not go into profiles or stuff like that

Print from different pc (also fresh installed driver) same issue

Print on normal paper -> looks good (much, much better anyway)

Glossy with lowest quality -> looks Good (much, much better anyway)

Print on iPF5000 from same PC -> perfect....

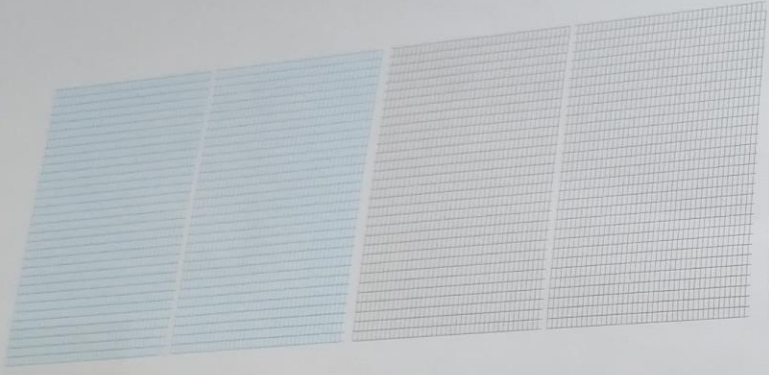


Nozzle test  
Perfect

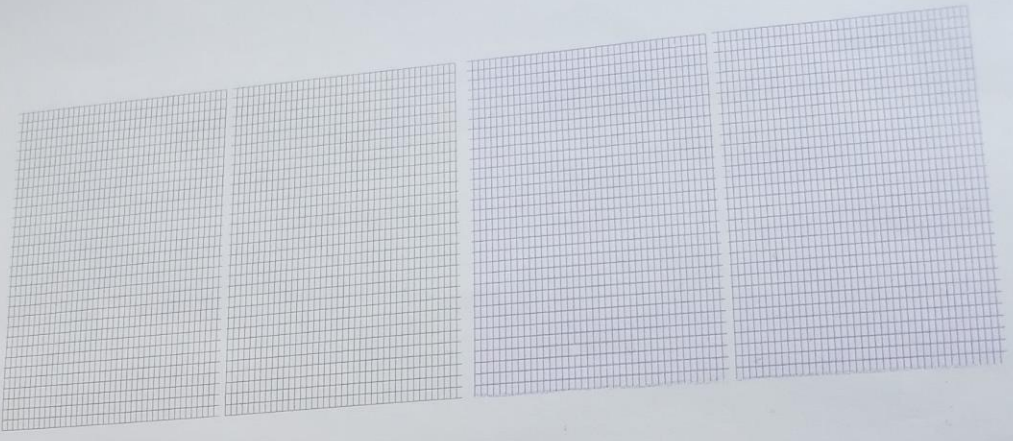
[ 1 / 4 ]

Canon imagePROGRAF iPF6100 Nozzle Check Pattern SERVICE

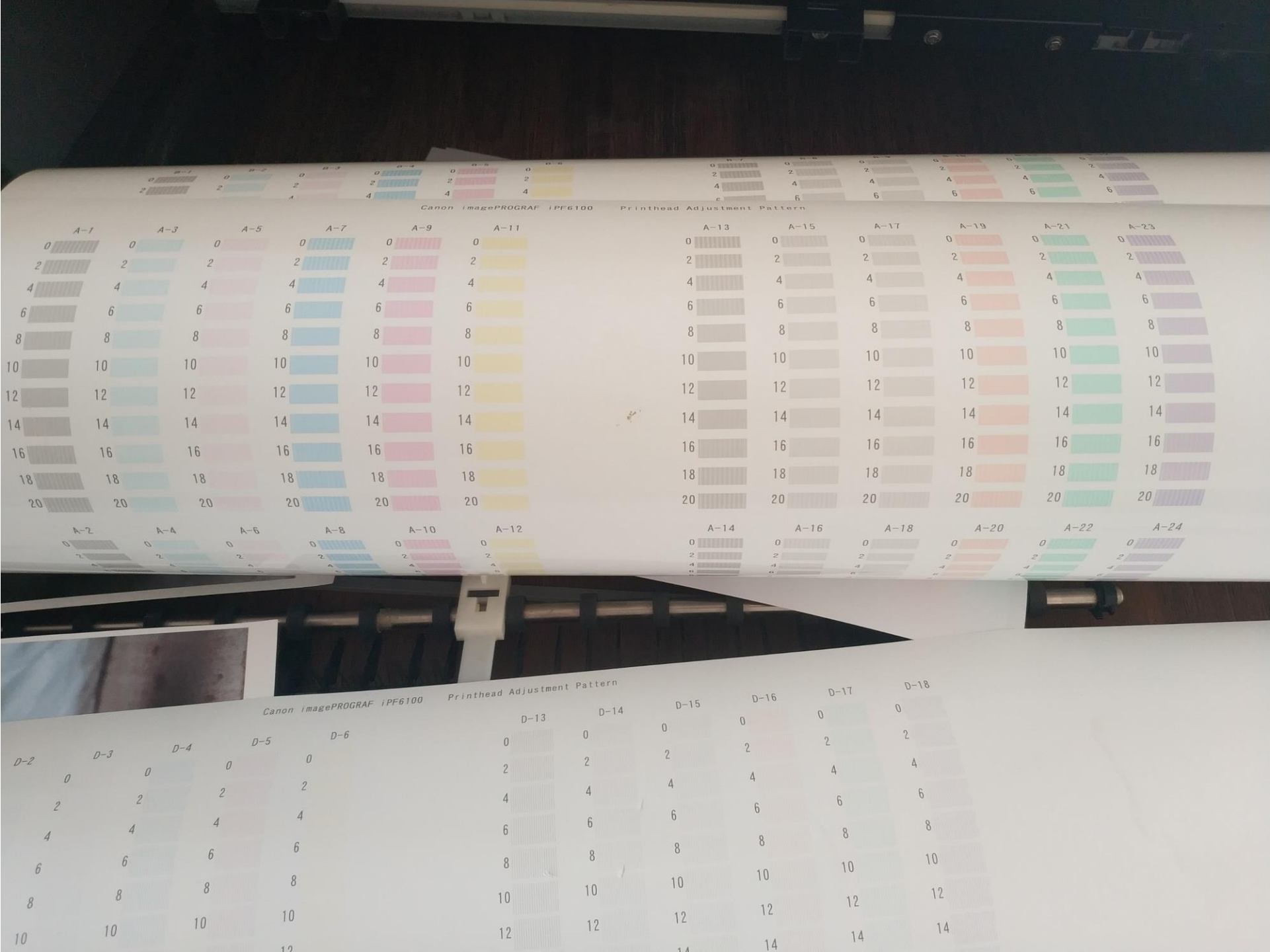
(L)



(R)

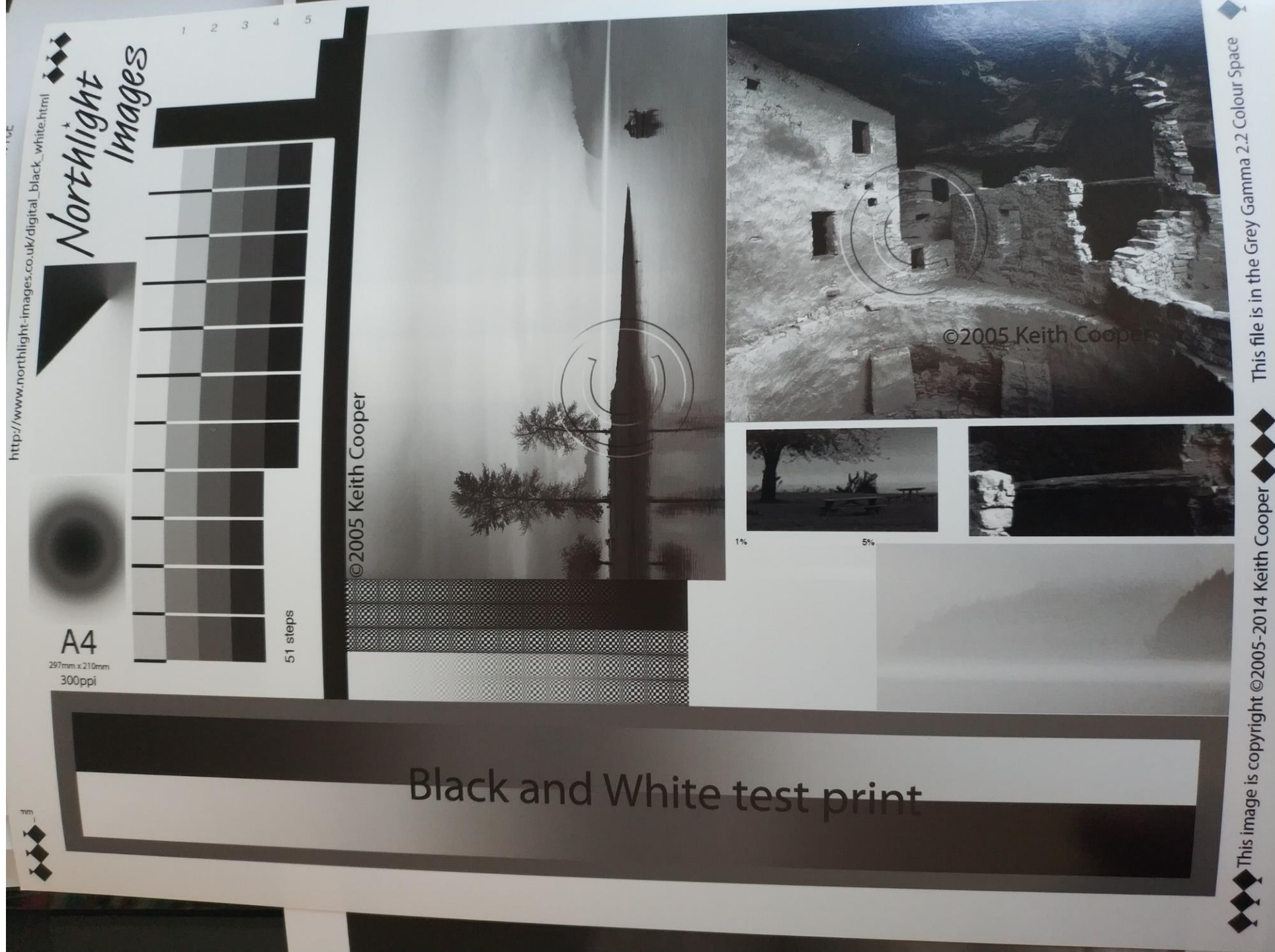


Some  
adjustment  
test  
Perfect





Some test  
from  
the internet  
B&W  
Perfect





Some test  
from  
the internet  
Color  
Perfect

